

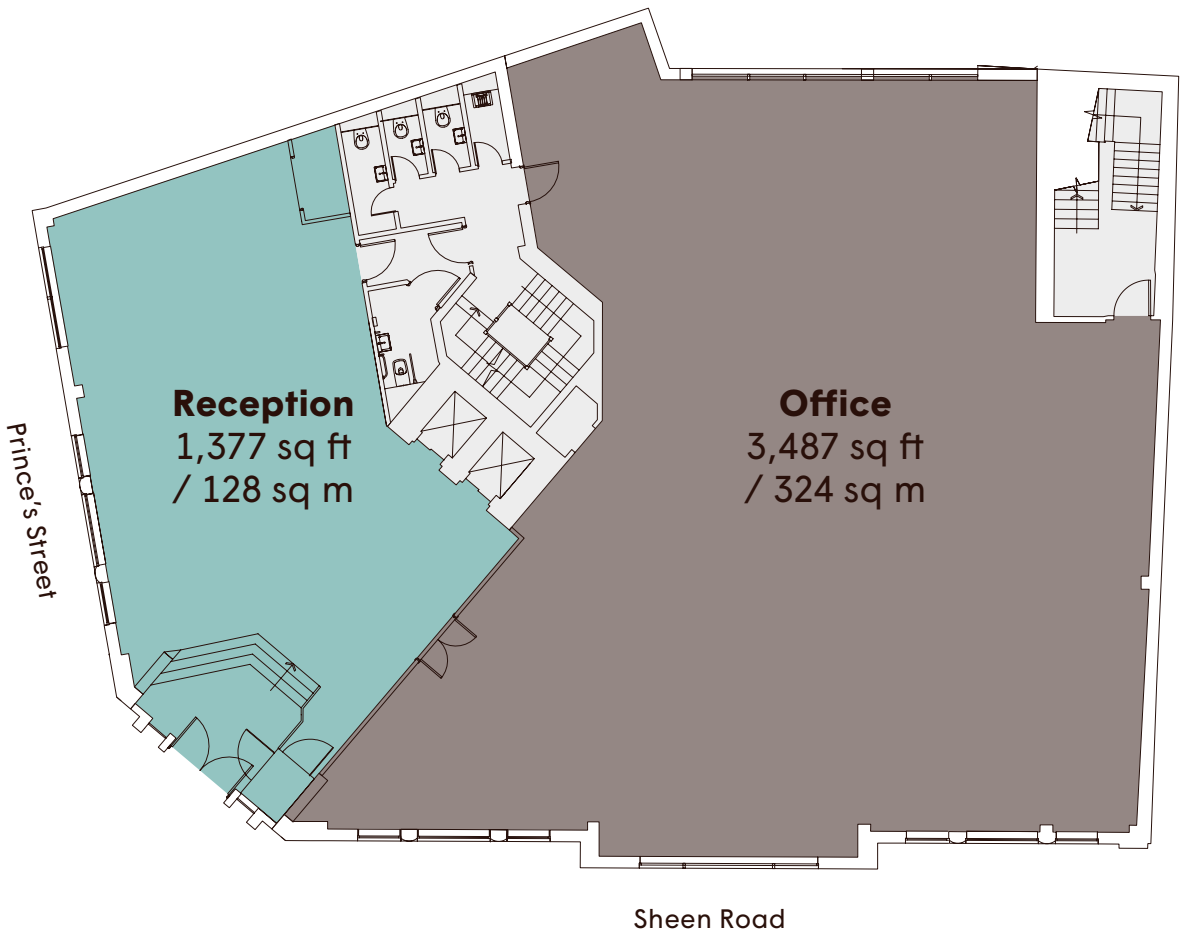
FRAME WORKS

Frame Works
2 Sheen Road
Richmond
TW9 1AE

Ground Floor

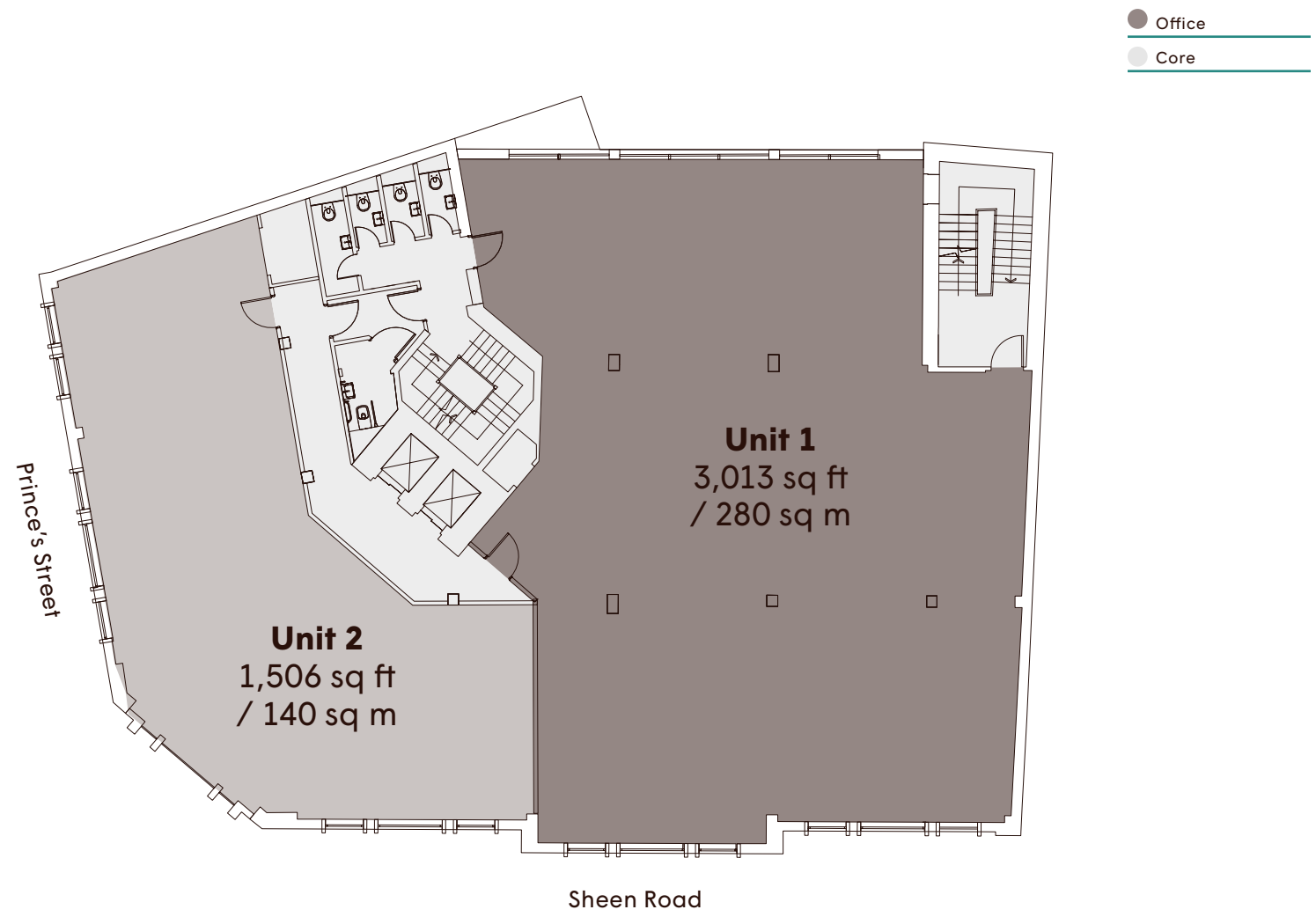
4,866 sq ft / 452 sq m

- Office
- Reception
- Core



FRAME WORKS

Frame Works
2 Sheen Road
Richmond
TW9 1AE



First Floor

4,789 sq ft / 450 sq m

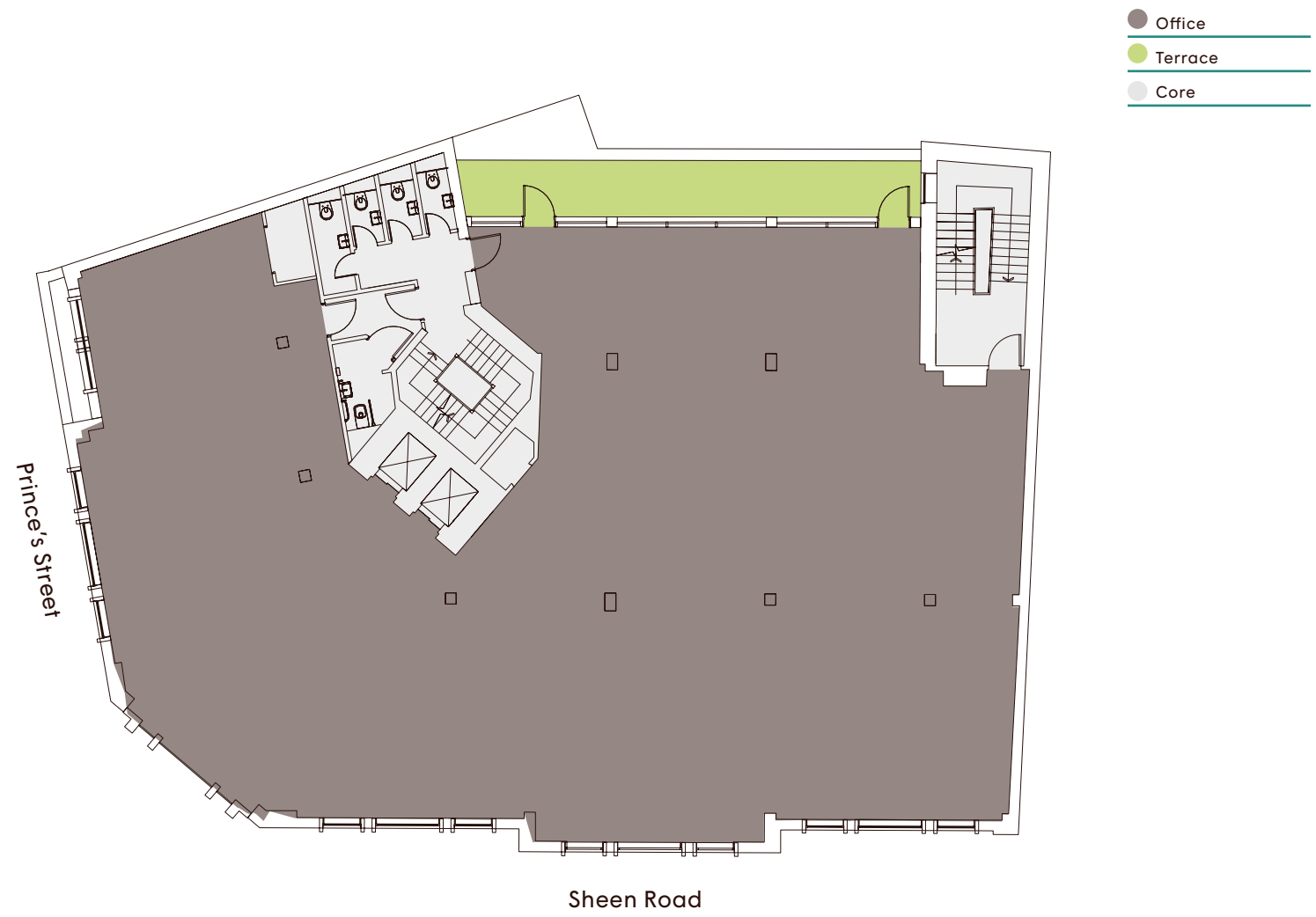


FRAME WORKS

Frame Works
2 Sheen Road
Richmond
TW9 1AE

Second Floor

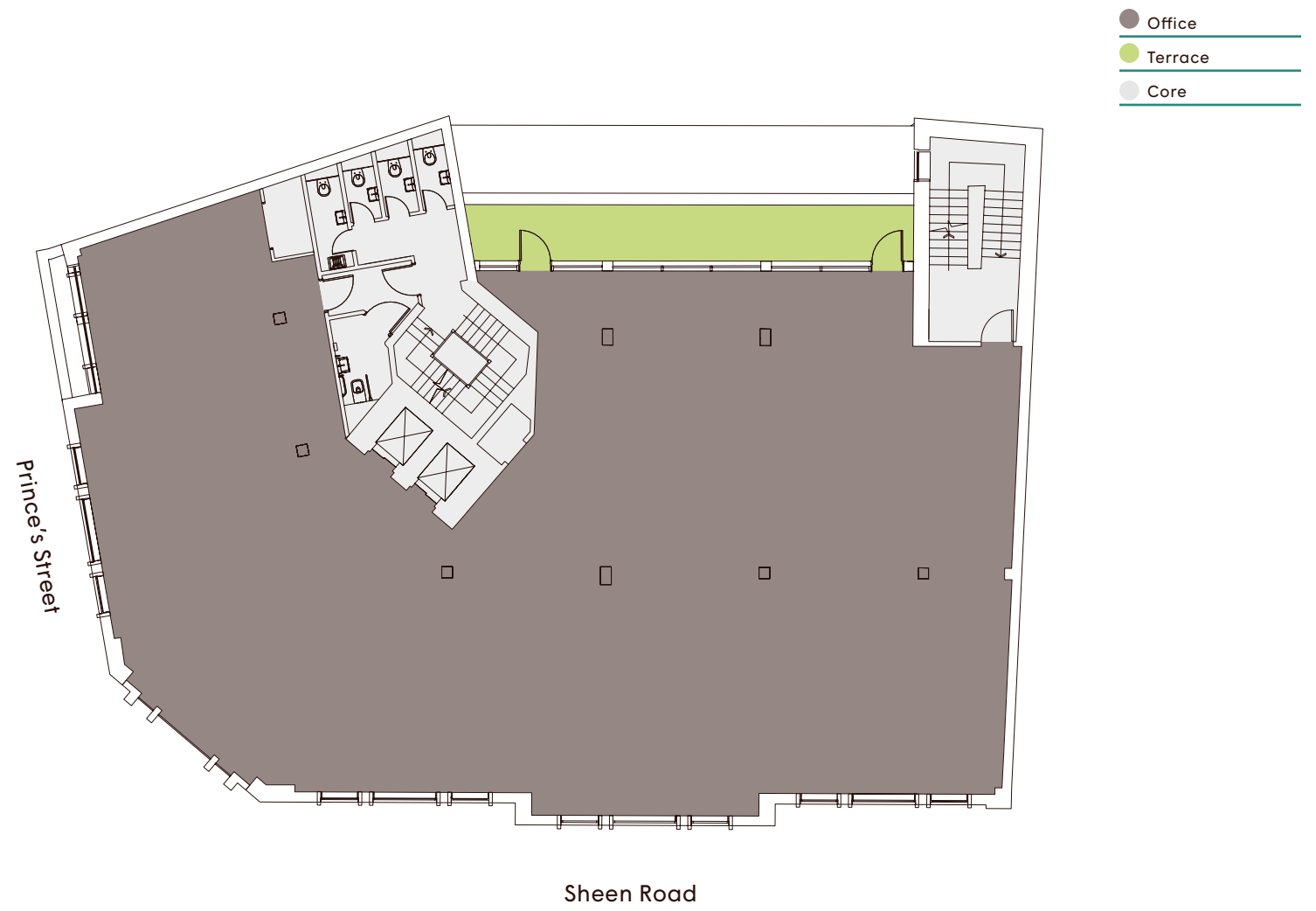
4,467 sq ft / 415 sq m



FRAME WORKS

Frame Works
2 Sheen Road
Richmond
TW9 1AE

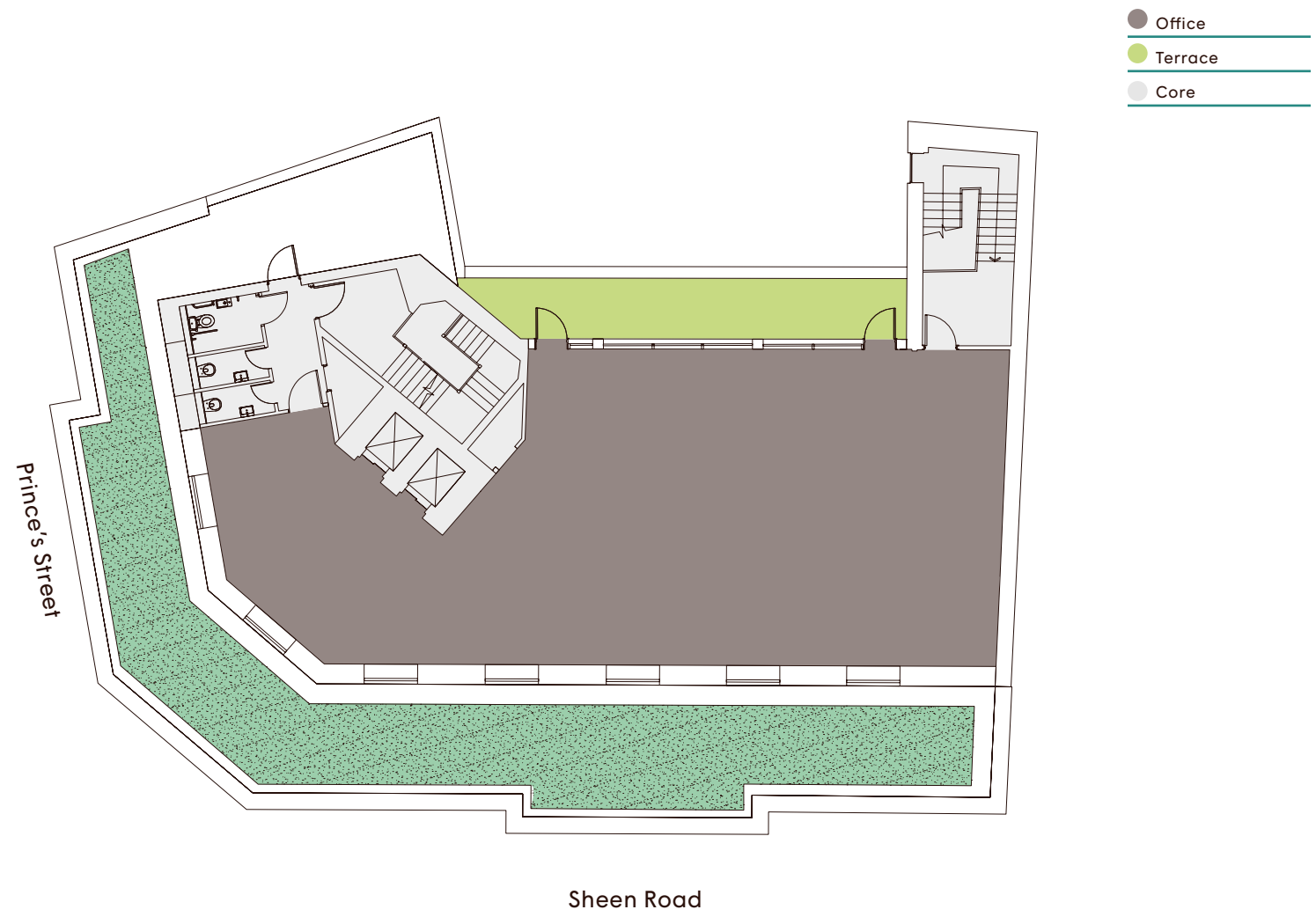
Third Floor
4,467 sq ft / 415 sq m



FRAME WORKS

Frame Works
2 Sheen Road
Richmond
TW9 1AE

Fourth Floor
2,023 sq ft / 188 sq m



FRAME WORKS

Frame Works
2 Sheen Road
Richmond
TW9 1AE

Basement

